

CAN-TIE CONCRETE RETAINING WALLS

Combined tie-back
and cantilever design
for economical and
structural advantages.



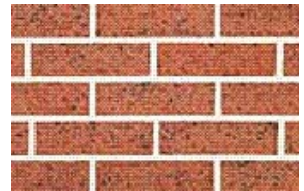
Choose from numerous
standard finishes or customize
a finish specific to your needs



Faux Finishes



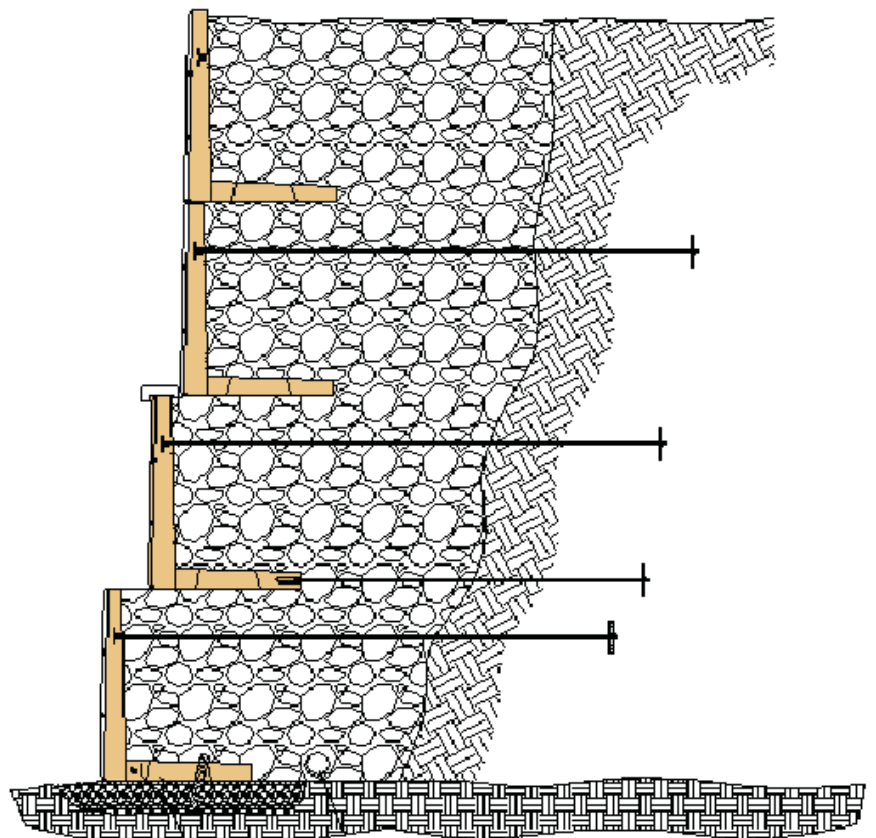
Limestone



Cast-in Brick

WHY CAN-TIE?

- Light weight
- Easy to install
- Numerous finishes
- Straight or radius panels
- Economical



CAN-TIE CONCRETE RETAINING WALLS

Variable radius

inside and outside curves

to suit your site

Lightweight design allows for

inexpensive construction

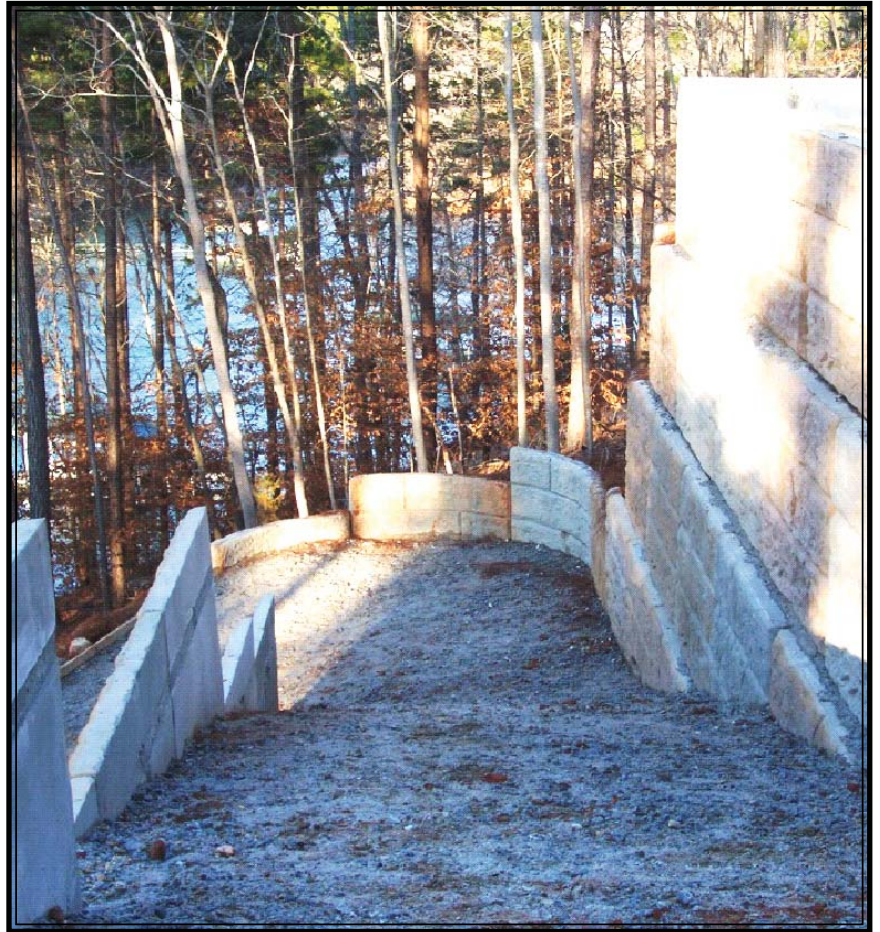
in hard to reach places with

readily available equipment

For more information, contact

Metromont Specialty Products

at 1.888.295.0383.



METROMONT[™]
SPECIALTY PRODUCTS

SOUTH CAROLINA ▪ NORTH CAROLINA ▪ GEORGIA ▪ TENNESSEE ▪ FLORIDA ▪ VIRGINIA